

Your Research Profile

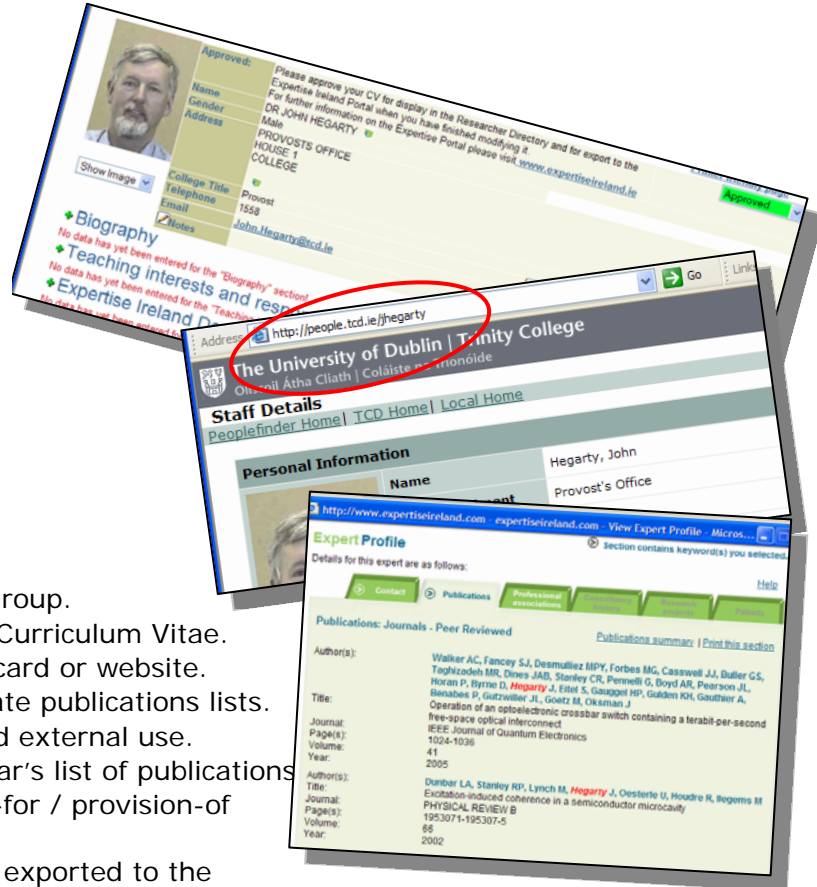
Maximise Impact, Save Time with Trinity's Research Support System

What is the Research Support System?

- TCD's Research Support System (RSS) is a web-based information system, which incorporates an expertise database.
- The Research Support System allows TCD researchers and postgraduate research students to input and update information on their research expertise, current interests and publications. It is intended to help reduce duplication and save time for TCD researchers.
- The Research Support System is directed by the Dean of Research in collaboration with the Library, I.S. Services and Research and Innovation Services.

What are the Benefits?

- Promotion of your research and that of your group.
- Facility to generate and download a personal Curriculum Vitae.
- A personal URL to link to from your business card or website.
- A means of creating and maintaining up-to-date publications lists.
- A means of generating reports for internal and external use.
- Automatic inclusion in the annual TCD Calendar's list of publications
- A means of avoiding repetition in the request-for / provision-of information.
- An opportunity for your research profile to be exported to the Expertise Ireland portal.
- Details from your RSS profile can be automatically used for your internal grant applications.
- An increasing number of Schools has arranged a 'live feed' of information from the RSS onto their web pages
- Upload the full text of your publication (subject to publishers' copyright policies – the 'final draft' is usually permitted) directly into **TARA**, TCD's open access digital repository, maximising its audience and impact on the web (and attracting more citations for you too!).



The link to expertiseireland.com...

An important part of the Research Support System is the regular export of data to the Expertise Ireland portal (www.expertiseireland.com). Only parts of the profile are exported – indicated by the expertiseireland logo.

In cooperation with the Irish Universities Association (IUA) and the Higher Education Authority (HEA), the Irish Universities, Queen's University Belfast and University of Ulster, along with the Irish Institutes of Technology, are joining forces to provide an All-Island Portal of Research Expertise to facilitate access to university expertise for Industry, Business and Government.

The 'Approved for Export' box must be selected on a TCD profile in order for its details to be exported to Expertise Ireland and the 'status' must be 'researcher'.



Access the Research Support System: <http://isservices.tcd.ie/portal/>.

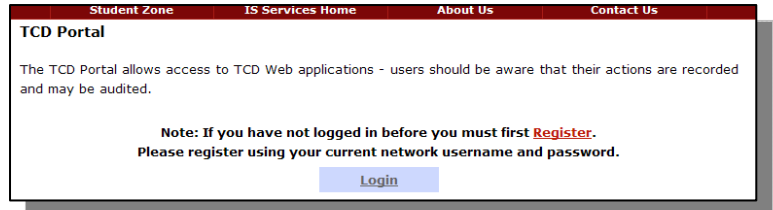
Please see next page for help with entering your details.

Your Research Profile

Maximise Impact, Save Time with Trinity's Research Support System

Step 1. Go to www.tcd.ie/local and click on 'TCD Portal' or go directly to: <http://isservices.tcd.ie/portal/>






First **Register** with your TCD username & password. When you get a confirmation message **Login** with the same username & password.



Step 2. Click on **Research Support System**

Step 3. Click on **Your Curriculum Vitae**

Step 4. Enter your information using these general commands:

-  Click on the questionmark at the top right hand corner of the screen for Help.
 -  The green plus symbol beside a category heading: click on this to add information to a section of the CV, or to add another part to a section (eg. each subsequent Award, Honour etc.)
 -  The pencil symbol at the beginning of a section: click on this to edit this part of the profile.
 -  The red X at the end of a line: allows you to delete that part or section
 -  This icon marks the sections of your profile which can be exported to expertiseireland.com
- Hover your cursor over a heading to get an explanation of its meaning.

Step 4. Don't forget to approve your profile!

Your details will not be publicly visible until you approve your profile in the box at the top of the CV screen.



For further information (FAQs, user manual) go to:

www.tcd.ie/research/rss

Need Help? Please contact:



Niamh Brennan
3rd Floor Ussher Library
ext. 1646
email: niamh.brennan@tcd.ie

No time to enter your details? Please send your CV or list of publications and research interests to the above email address. We'll contact you when it's done to seek your corrections and approval.